

Ceramic Air Wipers

Air Miser™

Drying wire, cable and other extrusions can be a tricky, expensive business. Huestis Machine Air Wipers use precision controlled air flow to save air, reduce noise and dramatically cut energy consumption.

The ceramic inserts are designed for long life and extended wear and tear from manufacturing demands. Because the inserts are ceramic there is no need for the V guide to center the product as on the standard plastic air miser.

Simply install the air wiper on the bracket, center your product and you are good to go!

Manufacturers love this air wiper as it compensates for operator error and misalignment and prevents damage to the plastic body.

Features

Highly Efficient

- Design is based on the maximization of controlled, properly directed air flow.
- A Venturi effect is also created at the entrance further increasing airflow.
- Uses much less air than an open pressurized line or adjustable model.

Very Economical

- Significantly cuts operating costs vs. adjustables or centrifugal blowers.
- Uses approximately .016 m³/min. per air jet at 2.8 bar (.56 SCFM at 40 PSI).

Extremely Quiet

- Low airflow provides a measurable decrease in noise level output.
- Produces only 75 dB at 3.5 bar (50 PSI).

Ceramic Air Wipers



HUESTISMACHINE

Versatile Applications

- Dries wire, cable, plastic, tubing, strip, and extrusions after cooling immersion.
- Ensures proper inspection, testing, printing, packaging and storage.

Non-Corrosive Materials

- Solid UHMW polyethylene bodies, removable brass jets, non-marking ceramic guides, stainless brackets.
- Custom Teflon, stainless or aluminum bodies and stainless jets available.

Critical Sizing

- Properly sized tolerances dry various products better than adjustable models.
- Quick-disconnect air line fittings and brackets allow fast size changes.

Air Miser™

- Split block, spring-hinged design allows knots, splices and other oversize irregularities to pass through without stopping production.
- Easily opened bodies allow quick thread up or line replacement.
- Snap-on mounting brackets offer quick changes and allow either right-left or left-right line direction.
- Three bracket sizes handle the full range of standard Air Misers.

Drying Theory

Controlled Air Flow

- Air is channeled through a manifold in the body and distributed to a ring of jets.
- Jet orifices restrict airflow to provide efficient drying at the lowest possible air consumption.

- Turbulence created by controlling air flow and direction removes water from the material surface.
- A Venturi effect is also created within the air wipe further increasing airflow.
- Sizes are recommendations only. Specific applications may require less or greater clearance for proper drying.
- Custom openings up to 7 in (177.8 mm) diameter available.

Air Flow/Noise

Efficient, Quiet Operation

- Most manufacturing plants already use compressed air making conversion to Air Wipes both quick and cost effective.
- Very often, a change to Air Wipes has resulted in reducing the number of compressors on line.
- Air Wipes require only a fraction of the horsepower needed to generate equal electrical requirements of a centrifugal blower.
- Air Wipes controlled airflow produces much lower noise levels than open lines or adjustable models.

Ceramic Air Wipers Specifications

Ceramic Air Wipe	Opening Size	Max. Wire Size	Min. Wire Size	Jet No.	Bracket Model
AMSC0062	.0625 in (1.59 mm)	.031 in (.787 mm)	N/A	4	AW463
AMSC0125	.125 in (3.18 mm)	.093 in (2.36 mm)	.031 in (.787 mm)	6	AW463
AMSC0187	.187 in (4.75 mm)	.156 in (3.96 mm)	.093 in (2.36 mm)	6	AW463
AMSC0250	.250 in (6.35 mm)	.219 in (5.56 mm)	.156 in (3.96 mm)	6	AW463
AMSC0312	.312 in (7.9 mm)	.281 in (7.14 mm)	.219 in (5.56 mm)	6	AW463
AMSC0375	.375 in (9.53 mm)	.343 in (8.71 mm)	.281 in (7.14 mm)	6	AW463
AMSC0500	.500 in (12.7 mm)	.469 in (11.91 mm)	.406 in (10.31 mm)	6	AW463
AMSC0625	.625 in (15.88 mm)	.594 in (15.09 mm)	.469 in (11.91 mm)	6	AW463
AMSC0750	.750 in (19.05 mm)	.719 in (18.26 mm)	.594 in (15.09 mm)	6	AW463
AMSC1000	1.00 in (25.4 mm)	.969 in (24.61 mm)	.719 in (18.26 mm)	6	AW463

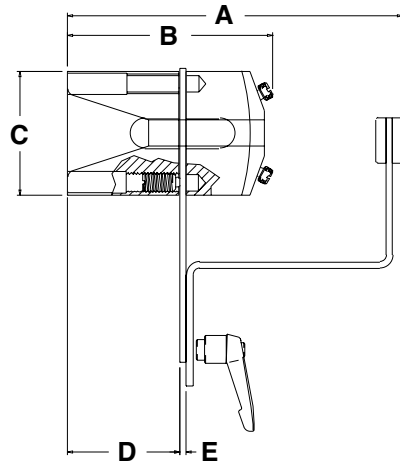
Air Flow	Air Miser* Flow per Jet	dB* Level
10 PSI (0.7 bar)	.238 SCFM (.0067 m ³ /min)	74.5
20 PSI (1.4 bar)	.354 SCFM (.0100 m ³ /min)	74.5
30 PSI (2.1 bar)	.460 SCFM (.0130 m ³ /min)	74.5
40 PSI (2.8 bar)	.557 SCFM (.0158 m ³ /min)	74.8
50 PSI (3.5 bar)	.653 SCFM (.0185 m ³ /min)	75.0
60 PSI (4.2 bar)	.751 SCFM (.0213 m ³ /min)	76.0
70 PSI (4.9 bar)	.843 SCFM (.0239 m ³ /min)	77.5
80 PSI (5.6 bar)	.948 SCFM (.0268 m ³ /min)	80.0

*Per each .75" (19.05 mm) empty Air Wipe. Results may vary.

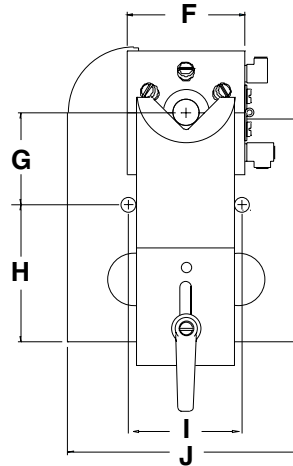
Ceramic Air Wipers

Specifications *(continued)*

Air Miser Size Range	Bracket Model	A	B	C	D	E	F	G	H	I	J
.125–1.00 in (3.18–25.4 mm)	AW463	6.39 in (162.3 mm)	3.92 in (99.57 mm)	2.38 in (60.45 mm)	2.15 in (54.61 mm)	.12 in (3.05 mm)	2.25 in (57.15 mm)	1.75 in (44.45 mm)	2.63 in (66.8 mm)	2.00 in (50.8 mm)	4.50 in (114.3 mm)



Side View Air Miser
with Bracket



Front View Air Miser
with Bracket